



Dear Patients,

At Rush University Medical Center, we believe that clinical research is the foundation for advances in patient care. Rush Interventional Heart and Vascular Research (RIHVR) is committed to life-enhancing research of diseases of the heart and vascular system. Our actively recruiting trials are outlined below. Please feel free to contact us for further information.

Sincerely, *the RIHVR team*

### Do you have PAD and ulcers of the foot or leg?

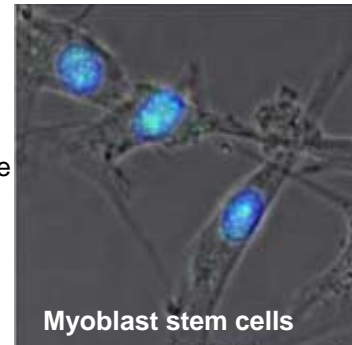
A new study for people with advanced peripheral arterial disease (PAD) and ulcers of the foot or leg is underway at Rush.



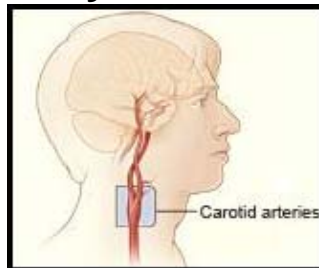
The investigational medication uses a gene (DNA) to stimulate the growth of new blood vessels into the foot (angiogenesis). We hope this approach may help reduce the need for amputation. To find out more, contact:  
**Christina Giannoulis:**  
(312) 942-9489,  
christina\_giannoulis@RUSH.edu

### Have you had a heart attack and are now suffering from congestive heart failure?

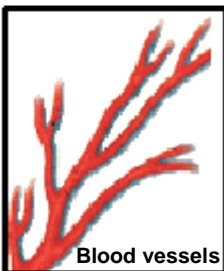
This new trial uses muscle cells from your leg to create stem cells which are then injected into the heart to repair damaged heart muscle and improve heart function. We hope that this therapy may help improve symptoms of congestive heart failure and may help improve your quality of life. To find out more, contact  
**Amy Graf:** (312) 942-8144,  
amy\_graf@RUSH.edu



### Do you have a carotid artery blockage?



Our doctors are researching a less invasive way to improve blood flow through the carotid arteries using stents. They are comparing this approach to traditional vascular surgery. We hope this investigational approach may be effective in preventing future strokes. To find out more, contact  
**Amy Graf:** (312) 942-8144,  
amy\_graf@RUSH.edu



### Do you have uncontrolled severe chest pain?

This research study is evaluating the benefits of injecting a growth factor into the heart muscle to stimulate the growth of new blood vessels, deliver more oxygen and decrease chest pain. Candidates for the study must have severe chest pain (angina) that is not controlled by medical therapy or suitable for angioplasty or surgery. To find out more, contact: **Charri O'Neill:** (312) 942-5376, charrise\_m\_oneill@RUSH.edu

To learn more about these studies and the doctors who are conducting them, visit our website:  
**[www.rush.edu/RIHVR](http://www.rush.edu/RIHVR)**